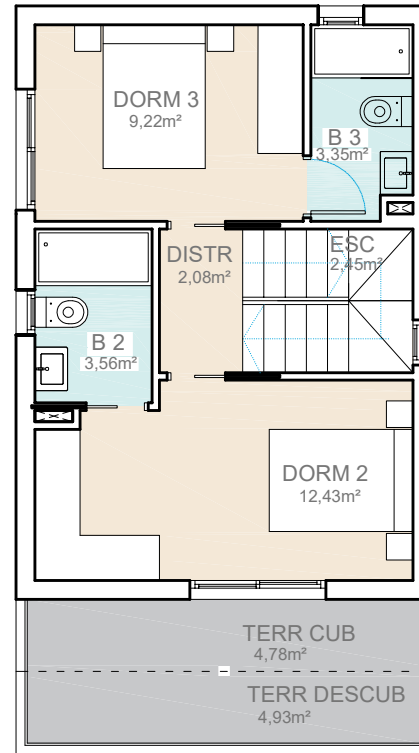
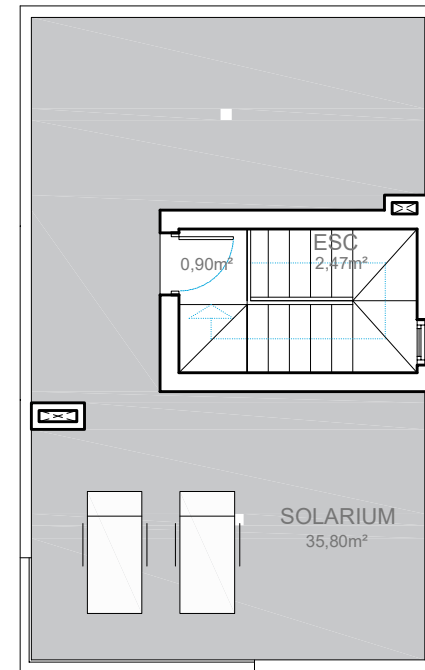


PLANTA BAJA



PLANTA PRIMERA



PLANTA CUBIERTA

## VILLA N° 9 - model MISTRAL

PARCELA N° 9 170,07 m<sup>2</sup>

3 DORMITORIOS/3B+1A+SOLARIUM

3 BEDROOMS/2B+1T+SOLARIUM

SUP TOT. CONSTRUIDA

112,41 m<sup>2</sup>