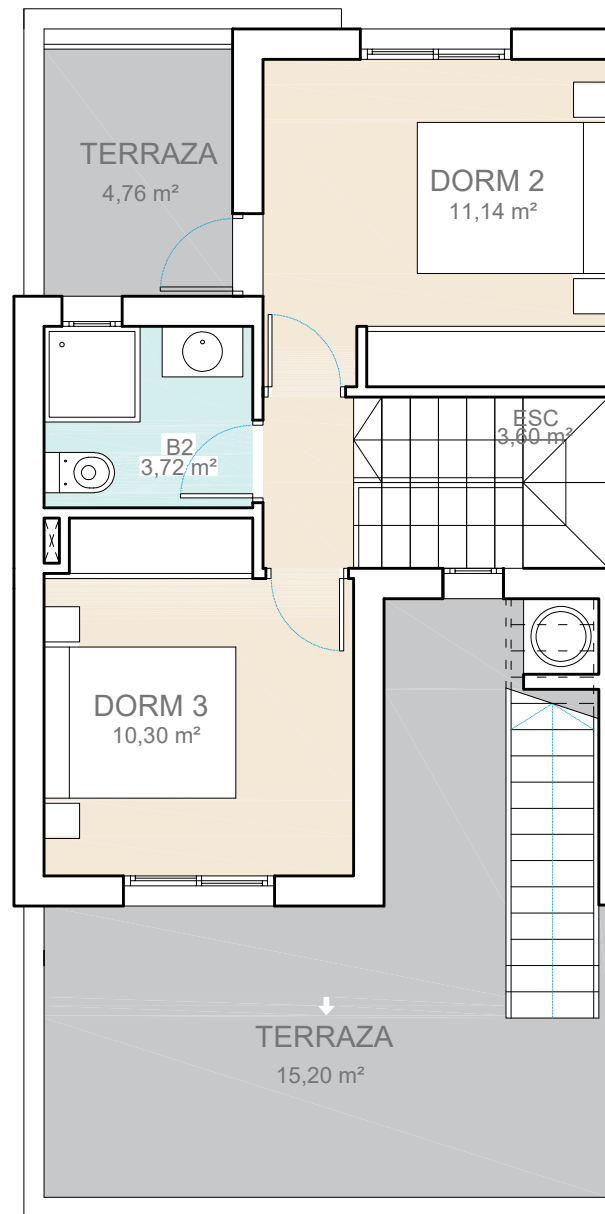


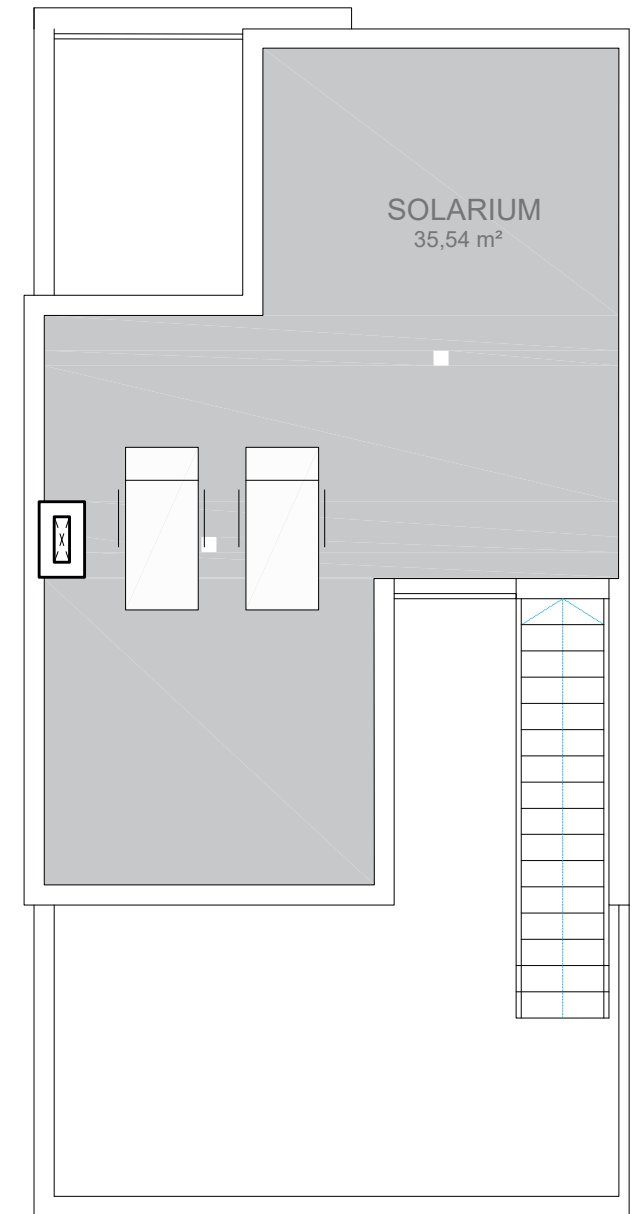
PLANTA BAJA

SUP. CONST. VIV.	52,64 m ²
SUP. C. VIV. AB. 50%	8,20 m ²
SUP. TOT. VIV. P.B.:	60,84 m²



PLANTA PRIMERA

SUP. CONST. VIV.	38,13 m ²
SUP. C. VIV. AB. 50%	
SUP. TOT. VIV. P.P.:	38,13 m²



PLANTA CUBIERTA

SUP. CONSTR. VIV. CERR	98,97 m ²
SUP. TERRAZAS	55,50 m ²
SUP. TOT. VIV.:	154,47 m²